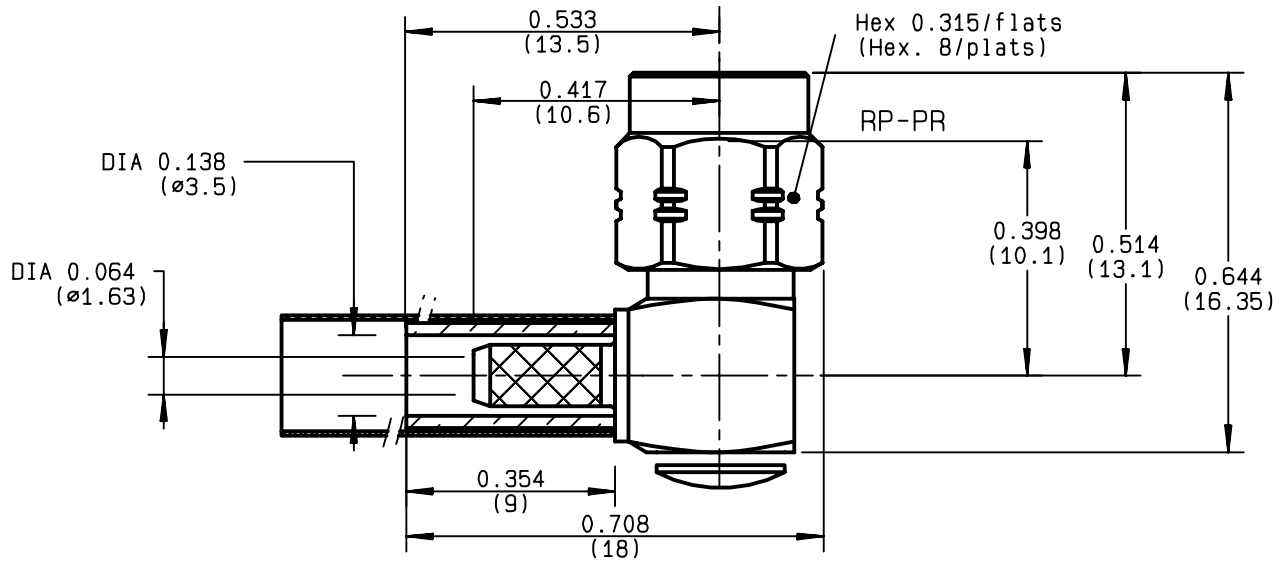


**RIGHT ANGLE PLUG CRIMP TYPE  
CABLE 2.6/50 D**

**R124.174.100**  
**SERIES SMA-COM**



NOMINAL IMPEDANCE	<b>50</b> Ω	CABLES : <b>K02252D</b> <b>RD 316</b>
FREQUENCY RANGE	<b>0-12.4</b> GHz	
TEMPERATURE RATING	<b>-65/+165</b> °C	
V.S.W.R	<b>1.15</b> + <b>.03</b> x F(GHz)Maxi	
RF INSERTION LOSS	<b>0.05</b> √F(GHz) dB Maxi	
VOLTAGE RATING	<b>250</b> Veff Maxi	
DIELECTRIC WITHSTANDING VOLTAGE	<b>750</b> Veff Mini	
INSULATION RESISTANCE	<b>5000</b> MΩMini	
HERMETIC SEAL	<b>NA</b> Atm.cm <sup>3</sup> /s	
LEAKAGE (pressurized only)	<b>NA</b>	
MECHANICAL DURABILITY	<b>100</b> Cycles	OTHERS CHARACTERISTICS
WEIGHT	<b>4.85</b> gr	CABLE RETENTION <b>110</b> N Mini
SPECIFICATION		CENTER CONTACT RETENTION
		Axial force - mating end <b>27</b> N Mini
		Axial force - opposite end <b>27</b> N Mini
		Torque <b>NA</b> cm.N Mini
		RECOMMENDED TORQUES
		Mating <b>60</b> cm.N
		Panel nut <b>NA</b> cm.N
		Clamp nut <b>NA</b> cm.N

CONNECTOR PARTS	MATERIALS	FINISH	(all values are given ) in micrometers
BODY	BRASS	BBR 2	
OUTER CONTACT			
CENTER CONTACT	BRASS	GOLD 1.3 OVER COPPER 2.5	
INSULATOR	PTFE	-	
GASKET		-	
OTHERS PIECES		BBR 2	

ISSUE	CREATION DATE	FILE PART-NUMBER
<b>9847C01</b>	<b>22/12/1995</b>	<b>95-0003-050</b>



*Connect to the future*

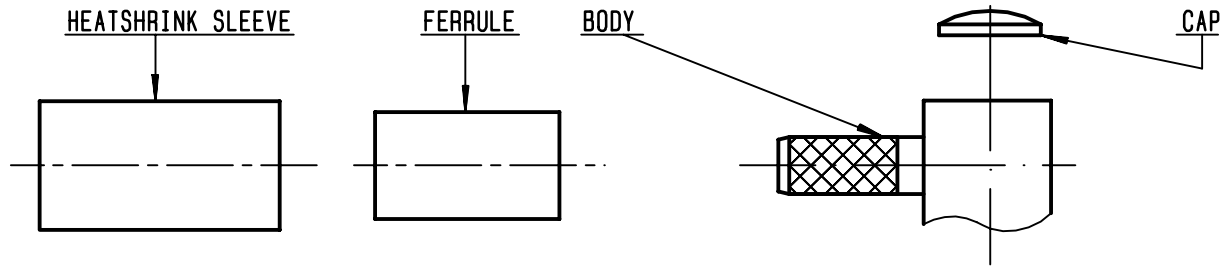
FANJAT 0.

The information given here is subject to change without notice.  
Design changes may be in order to improve the product .



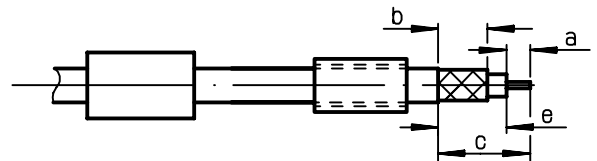
**R124.174.100**

ISSUE **9847C01** SERIES **SMA-COM**



①

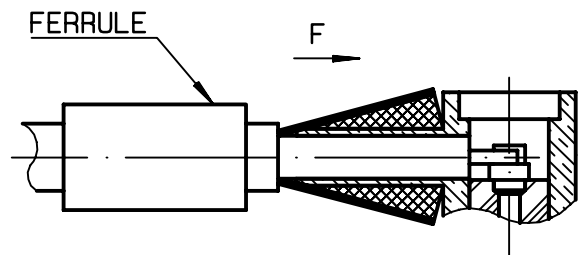
Slide ferrule and heatshrink sleeve onto cable .  
Strip the cable .  
-  
-



Stripping	a	b	c	d	e
inch	0.079	0.256	0.472	0	0.394
mm	2	6.5	12		10

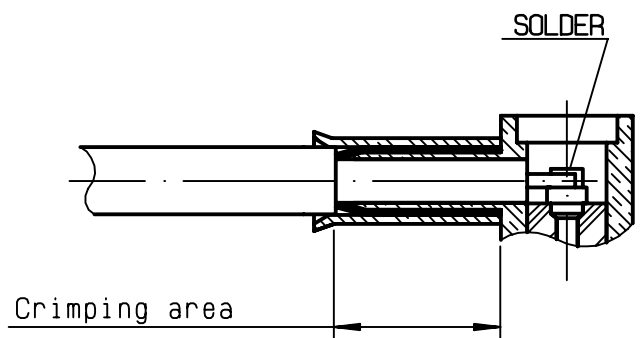
②

Fan the braid .  
Push connector body under the braid .  
Slide ferrule over braid  
( in direction F )  
-  
-



③

Crimp the ferrule with crimping tool R282 271 000 ( Hex. : 0.151 ) or crimping tool R 282 293 000 ( M22520/5-01 ) + dies R 282 235 037 ( M22520/5-37 ) Solder inner conductor .



④

Place the cap into body.  
Press cap flush or slightly below surface of body assembly .  
Slide sleeve over ferrule and heatshrink in place .  
-  
-  
-

